

## 12 & 14mm Cummins

### Common Rail Girdle kit



This kit includes 1 girdle, 14 top spacers, (large hole) 12 bottom spacers (small hole) 1 rear main spacer bar, 2 rear main stud nuts (12 point), and 12 main stud Ny-lock nuts.

***Before you start, READ AND UNDERSTAND THESE INSTRUCTIONS.***

***First check the torque on the main studs.***

***(12mm ARP 2000, 125 ft lbs)***

***(12mm A1 H11, 135 ft lbs)***

***(14mm A1, 150 ft lbs)***

( 1 ) Install top spacer on the 12 front studs.



( 2 ) Install top spacer on rear main stud.

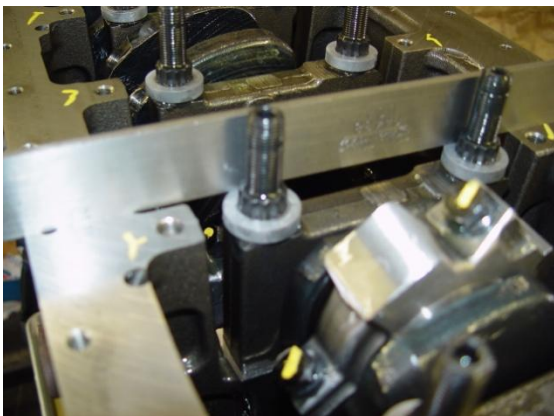
( The spacer may need to be ground flat on one side to clear the rear main seal plate. Do not remove more than is needed to clear the plate).



( 3 ) Using a straight edge check the spacer height. The spacers should be even with the oil pan rail, plus or minus .010

#### **NOTE**

***(TRIAL FIT THE GIRDLE BEFORE GOING ON TO THE NEXT STEP, CHECK ALIGNMENT OF ALL BOLT HOLES DUE TO FACTORY BLOCK TOLERANCES)***

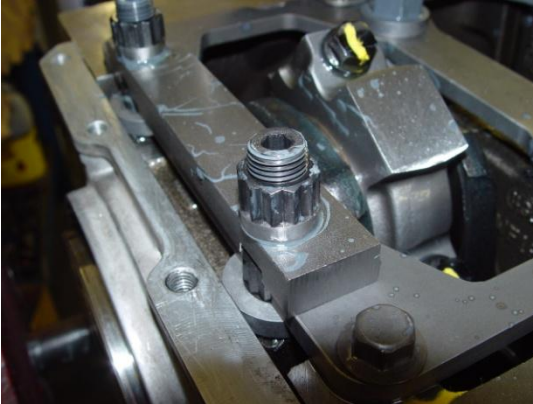




( 4 ) Install girdle with the notch for the oil pump pickup next to oil pickup hole (note position of the special bolt to clear pickup tube). Install lower spacers and nuts.

**NOTE**

Install original block stiffener bolts for girdle alignment



( 5 ) Install rear main spacer bar with 12 point nuts.



( 6 ) Torque all main girdle nuts.

**WARNING DO NOT OVER TORQUE**

14mm Ny-lock nuts to 120 ft lbs **FRONT 6 MAINS**

14mm modified 12 pt nuts to 120 ft lbs **REAR MAIN**

12mm Ny-lock and 12pt nuts to 85 ft lbs.

12mm modified 12 pt nuts to 85 ft lbs **REAR MAIN**



( 7 ) Modify oil pan to clear rear main studs.

(We can stamp these notches in the oil pan for you for a small fee; this makes the installation much easier and looks great.)

**FOR INSTALATION VIDEO GO TO**

<http://www.youtube.com/watch?v=bEN9w2Kal-4>

**NOTE**

*THESE SPECIFICATIONS AND INSTRUCTIONS SUPERSEDE THE VIDEO.*